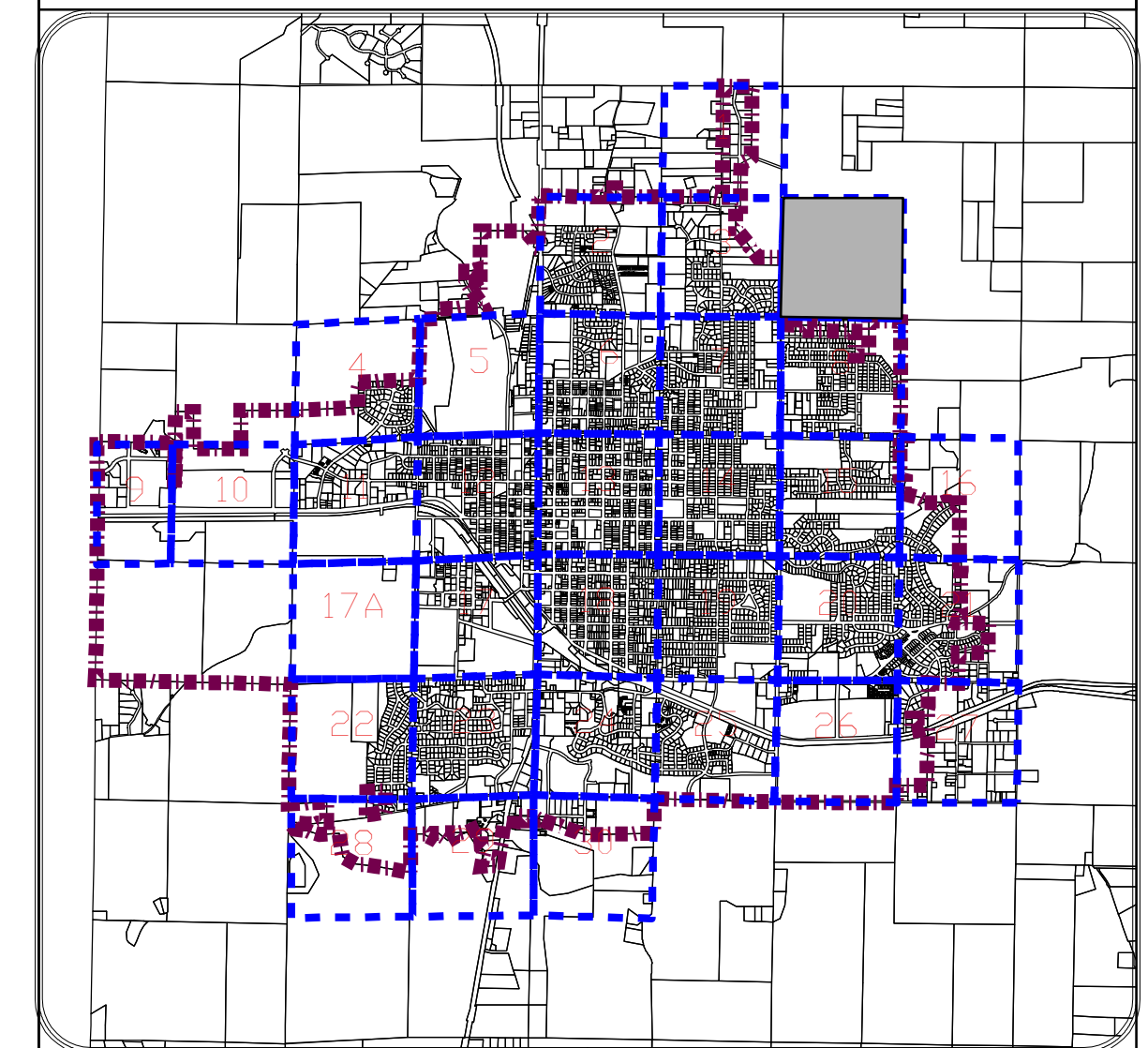


**LATAH COUNTY ASSESSOR  
OFFICIAL PLAT RECORD  
(Moscow)**

**T39NR05W SEC. 4 SW 1/4**



**SUBDIVISION INDEX**

**Blackwood 1st Add M0055**

**LEGEND**

- Subdivisions
- Parcels
- Streets
- Lot Lines



© Latah County Official Plat Record.

These maps are provided by The Latah County Assessor. Due to the variability of sources used Latah County makes no claims or warranties regarding the data contained herein.

**SCALE SHEET NUMBER**

**1" = 100'**

**PLOT DATE**

**July 30, 2012**

**FILE NAME**

**moscow\_mapbook.mxd** Lindsay D. Sherrock, Cartographer

**1203**

20.0 AC

**5553**

17.64 AC

**5413**

40.0 AC

1.02 AC

**5913**

#4535

1.25 AC

**5903**

#3618

#3063

1.03 AC

**6160**

#4041

#4743

9.62 AC

**6003**

32.87 AC  
1.19 RDAC

7.43 AC

**6203**

#4678

0.73 AC  
#6887

4.37 AC  
0.14 RDAC

0.91 AC

**6503**

#558

**6573**

1.60 AC

0.12 RDAC

**6504**

#4112

0.75 AC

0.06 RD

#5298

0.80 AC

0.06 RDAC

#6223

0.59 AC

0.07 RD

#6193

#6403

#692

0.14

0.14 AC

0.03 RD

#2189

#6490

0.41 AC

0.06 RD

0.41

0.14

0.14 AC

0.06 RD

#4662

#6480

0.58 AC

0.58

#3698

0.87

0.80 AC

0.06 RDAC

#6513

0.87

0.80 AC

0.06 RDAC

0.87

0.87

1.66 AC

0.12 RD

#6913

#1232

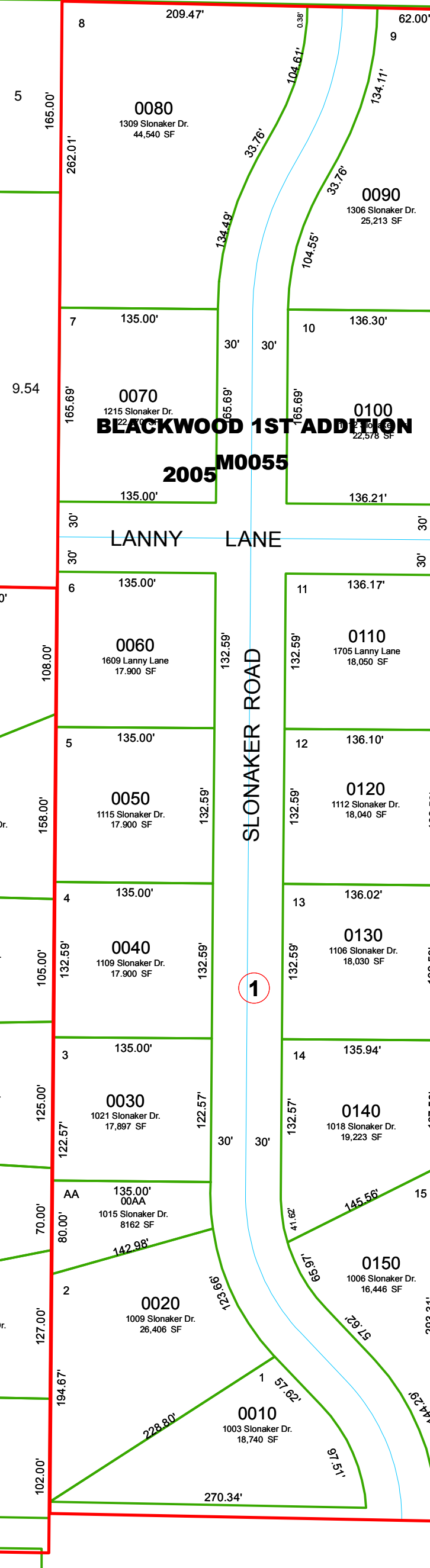
5.47 AC

0.50 RD

**6923**

#3794

City Limit Line



67.42

20

17.64

329.18

1.5

